

6.5.2 All the channels are blocked

In such a scenario, the detection threshold is taken to a lower value compared to the sRSS and none of the WSDs are transmitting. In SEAMCAT, the Tx power is set to -1000 dBm (Figure 166). The WSD frequency is the same as the victim frequency per event.

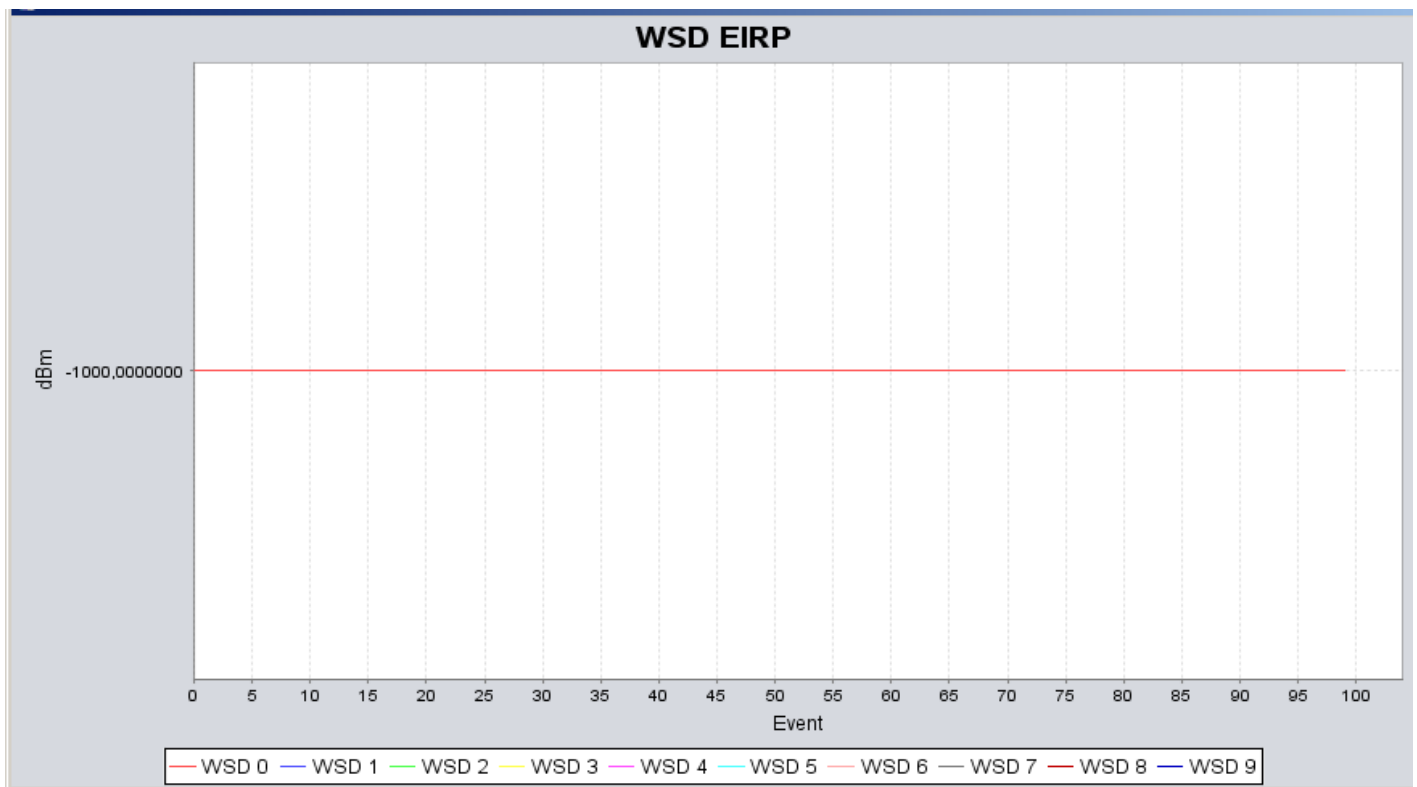


Figure 166: all the WSDs are off i.e. -1000 dBm

Note that in this specific case, the average e.i.r.p. and average WSDs per frequency can not be calculated and therefore can not be displayed as shown in Figure 168.

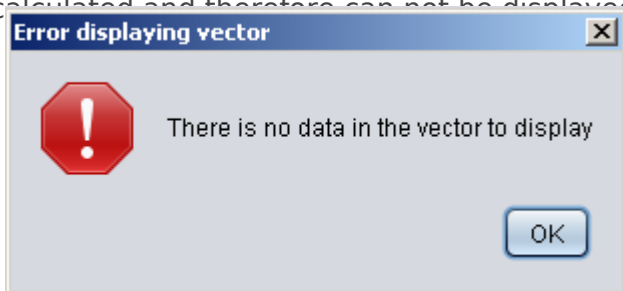


Figure 167: All the WSDs are off i.e. -1000 dBm

Revision #1

Created 2026-04-15 06:52:46 UTC by ECO TECH

Updated 2026-04-15 06:54:29 UTC by ECO TECH