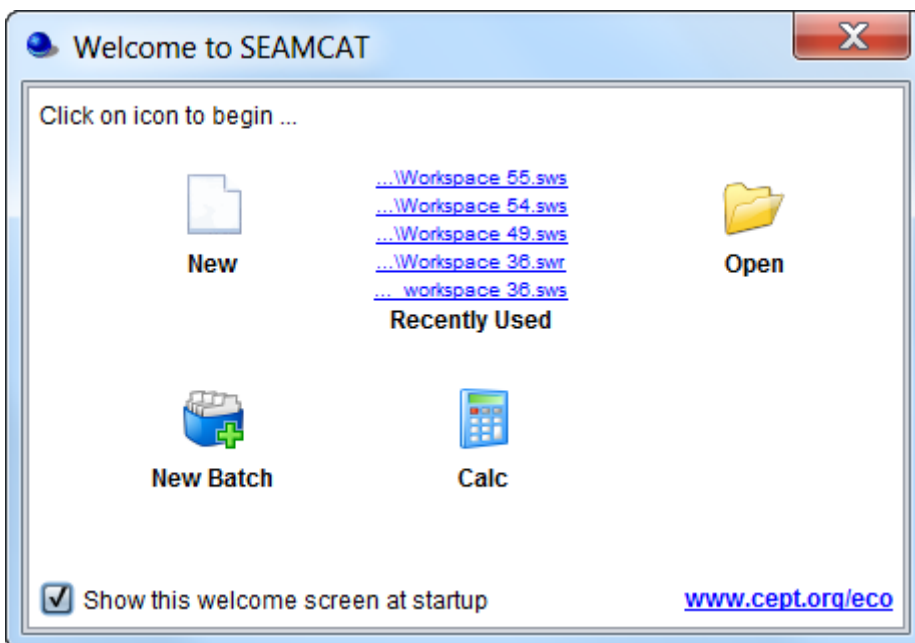


# 2.2 Welcome to SEAMCAT window

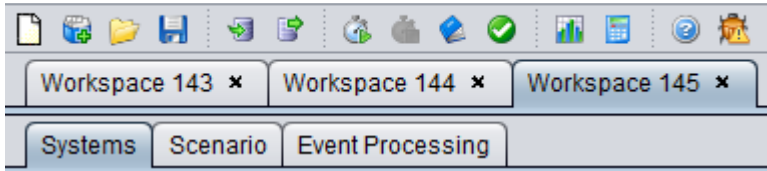
Every time SEAMCAT is launched, a welcome dialog box is displayed which allows the selection of various options (the welcome dialog box can be disabled under File/Configuration). The first step is typically to create a new workspace or open a previously created workspace. This is done by selecting 'New', 'Open' or 'Recently Used' (to open the most recent workspaces from the displayed list). 'New Batch' can be used to specify multiple sequential simulation runs using new or existing workspaces. 'Calc' launches the SEAMCAT calculator which is a convenient tool for common basic engineering calculations.



**Figure 19: Welcome pop up window**

When a new workspace is created, it will initially be automatically assigned a name 'Workspace xyz', where xyz is the serial number of the newly created workspace. The workspace name may be changed at any time afterwards using Save or Save As. The file in your file system can also be renamed - SEAMCAT will recognise the new name when loading the workspace.

Several workspaces can be open at the same time - different workspaces are shown as tabs at the top of the user interface. The size and position of the SEAMCAT subpanel graphical user interface (GUI) is maintained when switching from one workspace to another for ease of comparison between workspaces.



**Figure 20: Several workspaces in different tabs**

---

Revision #1

Created 2026-04-14 08:19:53 UTC by ECO TECH

Updated 2026-04-14 08:20:47 UTC by ECO TECH