

13.5.3 Propagation model plugin

To create or modify a library element containing parameters of a particular propagation model, select the **Propagation model** command from the **Library pull-down menu** or directly with **CTRL+SHIFT+P**.

Since the propagation models are implemented as plugin, it is possible to include a new propagation model using the .jar installer and to add it to the list of existing pre-defined models. Any of the propagation models is then selectable as shown in the picture below:

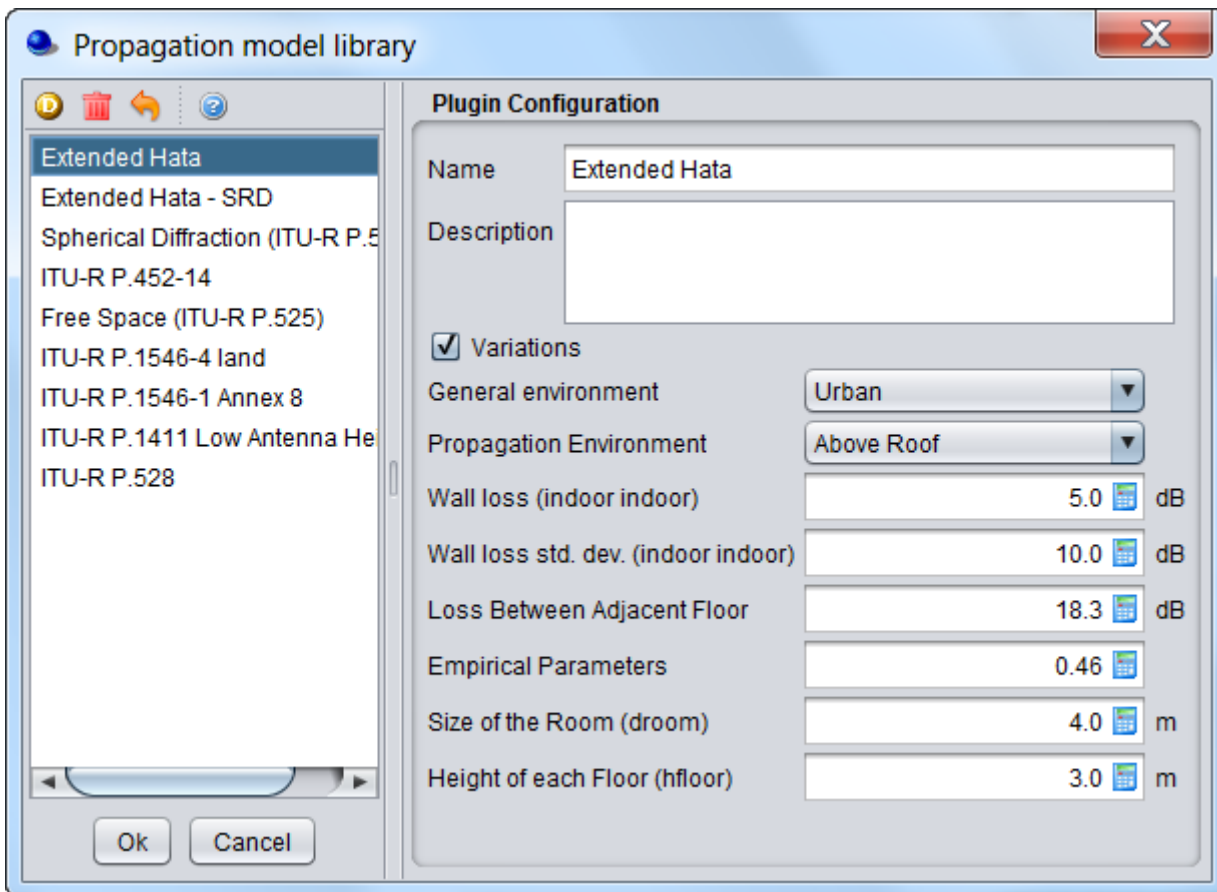


Figure 298: Example of the propagation model plugin library

More detailed information on specific propagation models is available in ANNEX 17:

Revision #1

Created 2026-06-22 08:15:44 UTC by ECO TECH

Updated 2026-06-22 08:16:08 UTC by ECO TECH