

13.4.1 System elements

To create or modify a library element containing parameters of a particular system, i.e. generic, cellular network like CDMA or OFDMA, select the system library elements command from the **Library pull-down menu** or directly **CTRL+SHIFT+S**.

A list of existing pre-defined systems will be selectable as shown in Figure 282 for a generic system and Figure 283 for cellular systems (e.g. CDMA UL network).

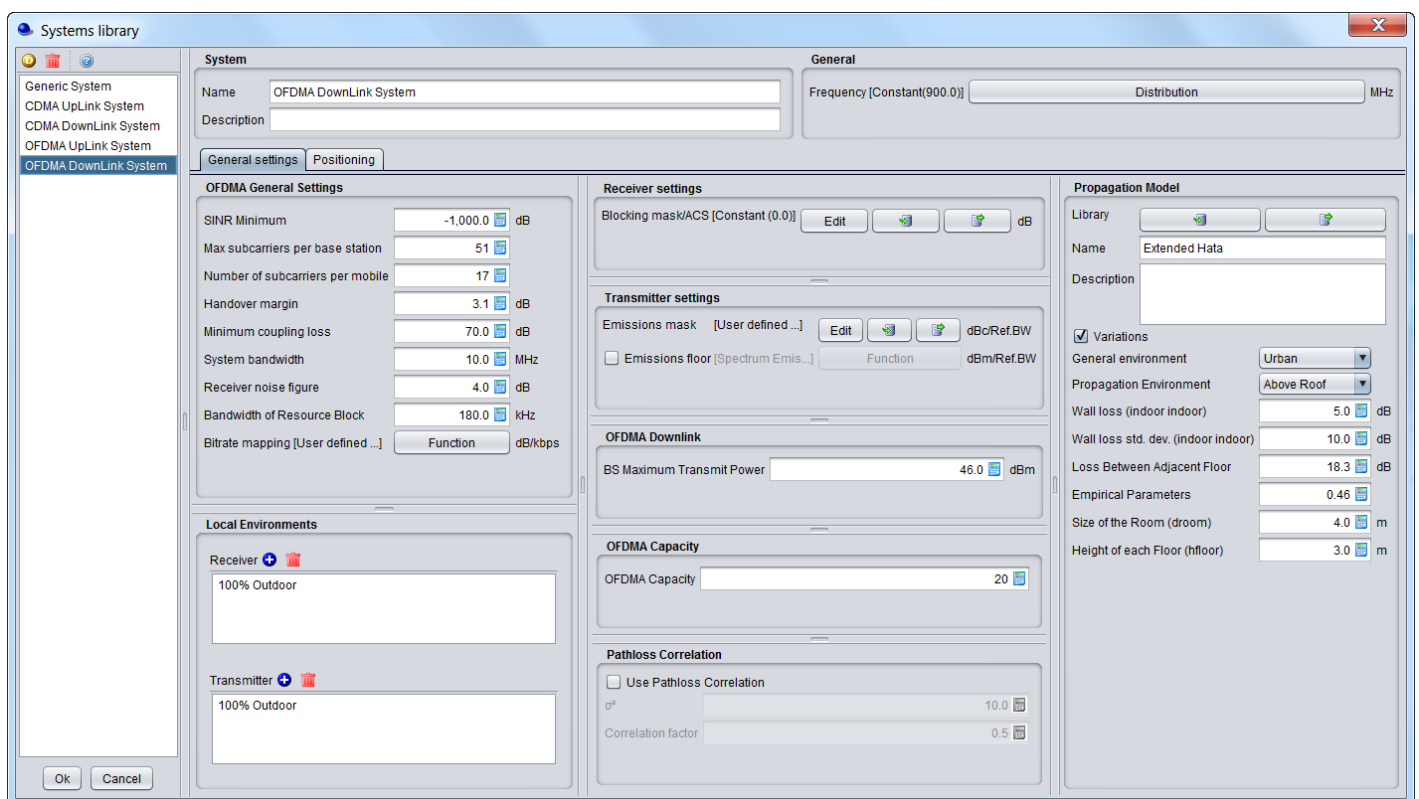


Figure 282: Example of generic System elements

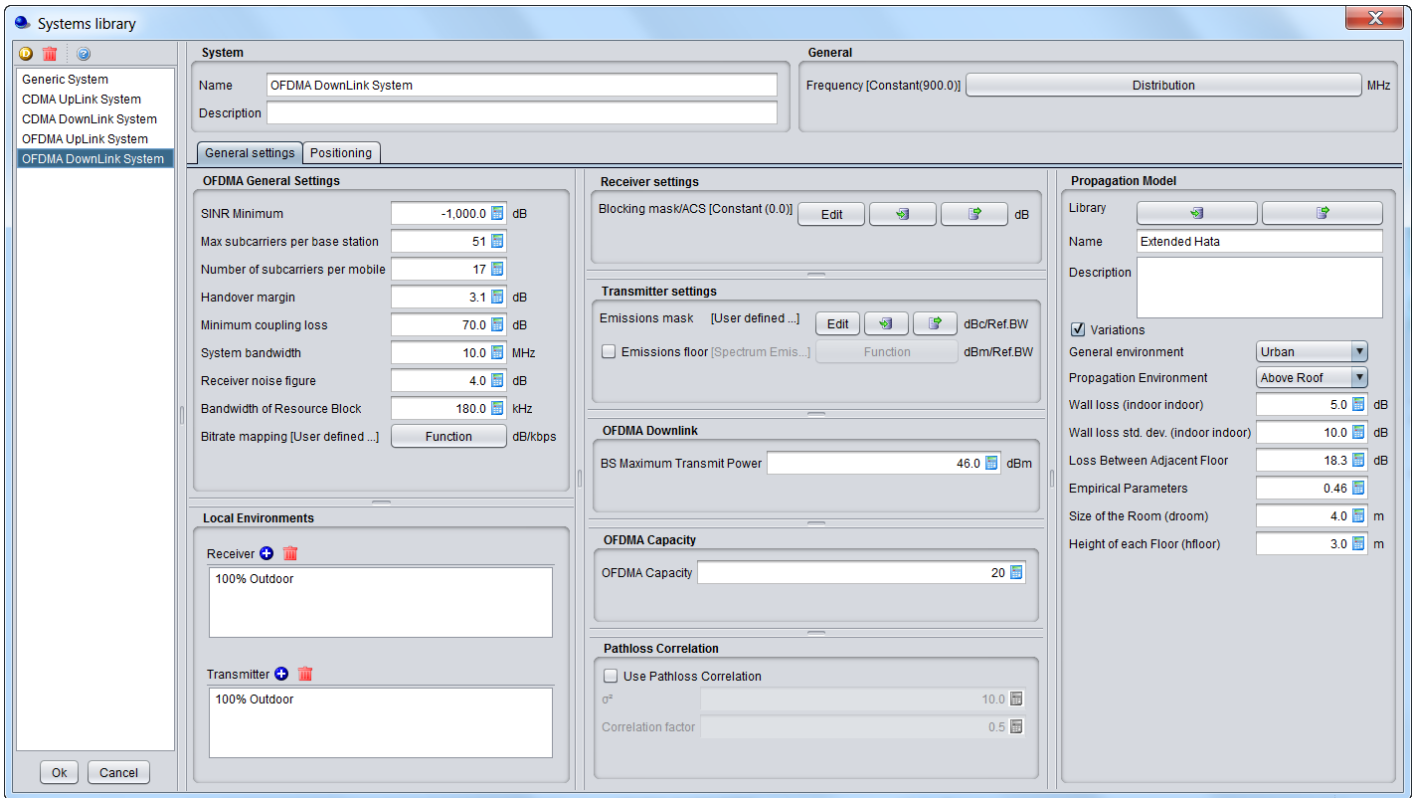


Figure 283: Example of CDMA UL System elements

When adding a new system, enter the name (unique identifier) and a description.

Note: It is also possible to create a system from the workspace and export it to a local library.

Revision #1

Created 2026-06-22 07:54:12 UTC by ECO TECH

Updated 2026-06-22 07:55:14 UTC by ECO TECH