

11.3 Loading an EPP to a simulation

To use EPP in a simulation go to the event processing tab and click the plus sign (Figure 239).

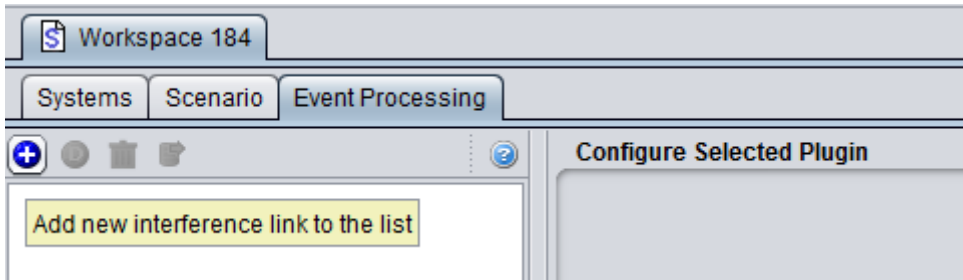


Figure 239: Using EPP in a workspace

You will be prompted with a list of available EPPs and their preview as shown in Figure 240.

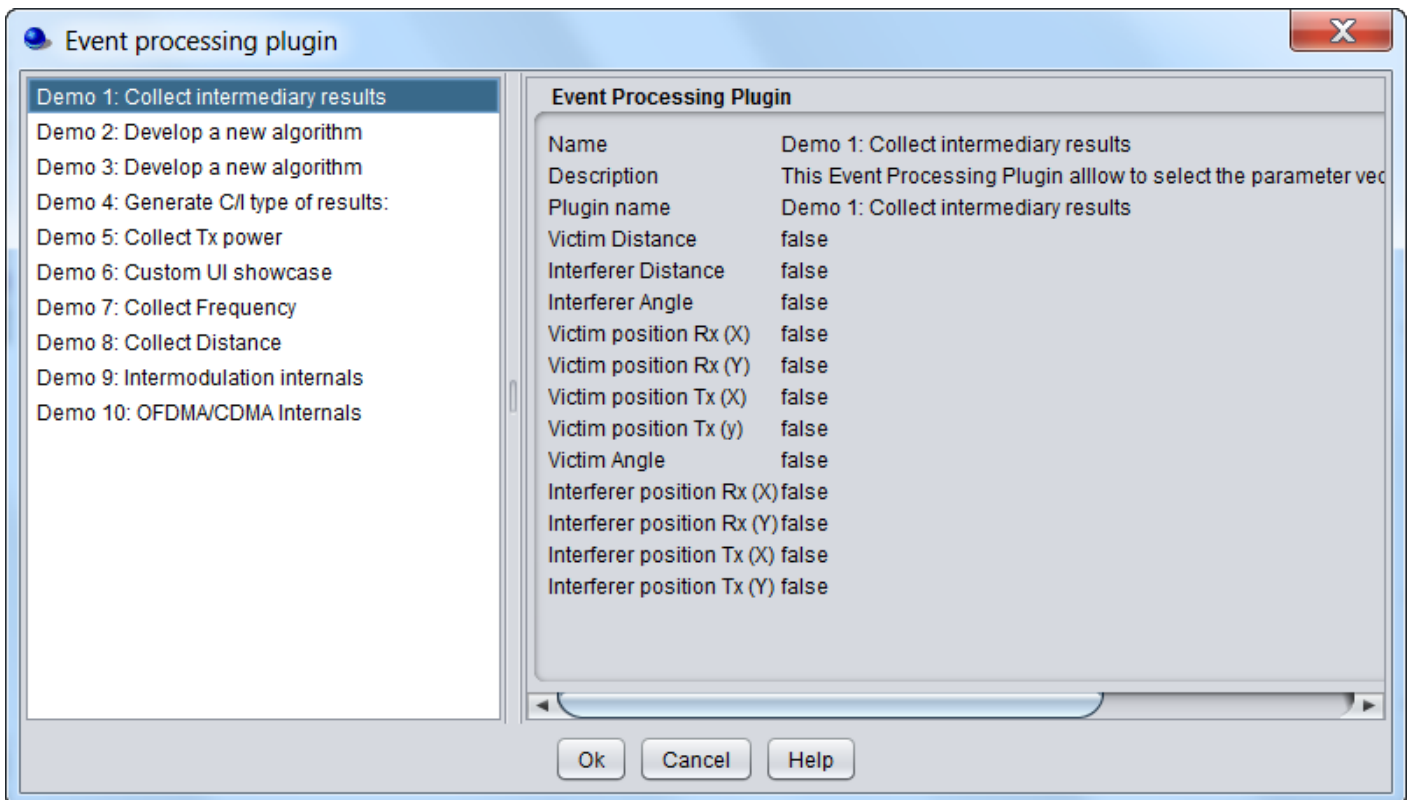


Figure 240: List of available EPPs

You can add as many EPPs as you want to your simulation.